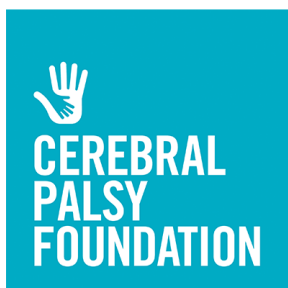


CELEBRATING  
INCLUSION & INNOVATION



Gala  
2022

WORLD CEREBRAL PALSY DAY  
THURSDAY, OCT 6, 2022 7PM

WestEdge, New York City

# Welcome!

I am thrilled to welcome you to the Cerebral Palsy Foundation Annual Gala in recognition of World Cerebral Palsy Day. We are delighted to be in person again this year!

Our mission is to be a catalyst for positive change for the 17 million people living with cerebral palsy around the world. Among our signature strategic initiatives, the Cerebral Palsy Foundation is making transformational progress in Early Detection & Intervention of Cerebral Palsy across the U.S. and are reaching the milestone of training a critical mass of clinicians. We have significantly decreased the age of detection for cerebral palsy among high-risk infants and are now implementing great new interventions that will improve long term outcomes. In the next 12 months we will also apply our knowledge to pilot projects globally in Ireland, Peru, Bulgaria and Uganda ensuring the most vulnerable babies and toddlers are reached.

Our work across the lifespan for people with cerebral palsy is just as important as improvements we are making for infants and young children. We are thrilled to announce we are leading the development of the first International Preventative Healthcare Guidelines for Adults with Cerebral Palsy. This vitally important project, the first of its kind in the field of cerebral palsy will follow our network approach to ensure effective implementation, advocacy and dissemination models are developed.

More than ever, there is an urgent need for dialogue about inclusion and the implementation of inclusive classroom practices for all children of school age. We believe that understanding the “why” of inclusive education and disability advocacy can shape educators in “how” to move forward more successfully. We have also taken this approach with our corporate partners with the development of “Inclusion Matters” training in the workplace.

What makes the Foundation unique is our novel approach to identify and unlock potential in important categories. We listen to researchers, industry leaders, doctors and people with cerebral palsy to identify needs. We are able envision and articulate the missing pieces and fill the most important gaps to translate needs and ideas to practice that changes lives. In the face of a global pandemic, we became even more agile and responsive with over 90 cents of every dollar raised going directly to our programs and the cerebral palsy community. Thank you for your commitment to our community and support for the Cerebral Palsy Foundation’s mission.

Sincerely,

Rachel Byrne  
Executive Director



## Host

Jason Benetti,  
American Sports Announcer

## Welcome

Rachel Byrne,  
Executive Director, Cerebral Palsy Foundation

## Dinner & Celebration

## Honorees

**Healthcare Visionary Leadership:** Dr. Kathleen Friel,  
Burke Neurologic Institute, Weill Cornell Medicine

**Legislative Advocacy:** United States Congressman Steve  
Cohen (TN), and Senior Policy Advisor Craig Dulniak

**Business Inclusion Innovation:** Vera Bradley

## Presenters

Zach Anner  
Chelsea Bear  
Ila Eckhoff  
Cynthia Frisina  
Cathryn Gray

Ashley Harris Whaley  
Jerron Herman  
Xian Horn  
Emily Ladau

## Performers

Donald Lee  
Meredith Fages  
Caitlin Knowles

## Fundraising Efforts

100% of tonight's donations will go the Cerebral Palsy Foundation's life changing programs.



# Gala **HOST** 2022

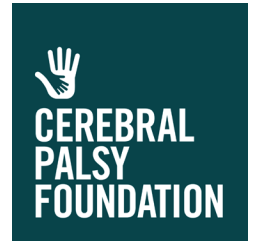
## JASON BENETTI

American Sports  
Announcer

Jason Benetti joined FOX Sports in 2022, contributing to the network's live sports slate beginning with college football this fall. Jason has served as a play-by-play announcer for some of the industry's biggest events, spanning multiple sports from college football and basketball to Major League Baseball and Olympic baseball contests. Since 2016, Jason has served as the voice of the Chicago White Sox, and this season he was named the voice of NBC Sports' MLB Sunday afternoon package. He also provided play-by-play for the network's Olympic baseball coverage during the 2020 Summer Games. Jason began honing his broadcasting chops early on, calling football games for his high school radio station. He continued with play-by-play duties throughout his time in college and law school, ultimately holding roles with several regional broadcast networks, including Westwood One, Time Warner Cable Sports, the BIG EAST Conference and the Syracuse Chiefs.

The Illinois native graduated from Syracuse University in 2005 with bachelor's degrees in broadcast journalism, economics and psychology. He went on to earn his J.D. at Wake Forest School of Law in 2011.

Jason Benetti has cerebral palsy, which impacts his balance and ability to walk, but not his on-air work. Or his sense of humor.



## Board of Directors

**Michelle Kassner,**  
CPF Chair  
President, Kassner Foundation

**Levee Brooks**  
Chief Operating Officer, Marsh North America

**Rachel Byrne**  
Executive Director and President, CPF

**Lily Collison**  
Author

**Patrick Downes**  
Managing Principal, D Capital LLC

**Dr. Andrea Duncan**  
Medical Director of the Neonatal Follow Up Program  
Children's Hospital of Philadelphia

**Ila Eckhoff**  
Managing Director, BlackRock

**Dr. Deborah Gaebler-Spira**  
Professor of Physical Medicine and Rehabilitation  
and Pediatrics, Shirley Ryan AbilityLab

**Wendy Garfinkel**  
Attorney

**Peter W. Shapiro**  
Shapiro Family Foundation

**James P. Volcker**  
Grants Manager, Dana-Farber Cancer Institute

## Staff

**Rachel Byrne**  
Executive Director

**Ashley Harris Whaley**  
Director of Engagement &  
Communities

**Cynthia Frisina**  
Senior Vice President of  
Strategic Partnerships

**Jennifer Lyman**  
CP Resource Content  
Manager

**Debbie Fink**  
Vice President of  
Education & Inclusion

**Elizabeth "Beppe" Jones**  
Administration Manager

**Rebecca Lam**  
Vice President of  
Programs and Operations

**Josephine Harrer**  
Social Media Associate

**David Stoner**  
CPR Content Associate

## Event

**Creative Edge Parties**  
Production and Design



## Scientific Advisory Council

**Deborah Gaebler-Spira, MD, SAC Chairman**  
Shirley Ryan AbilityLab

**William W. Andrews, PhD, MD**  
University of Alabama at Birmingham

**Jan Brunstrom-Hernandez, MD**  
1 CP Place

**Hank Chambers, MD**  
Rady's Children's Hospital & Health Center

**Ted Conway, PhD**  
Florida Institute of Technology

**Diane Damiano, PT, PhD**  
National Institutes of Health

**Mauricio Delgado, MD, FRCP, FAAN**  
University of Texas Southwestern Medical Center

**Darcy L. Fehlings, MD MSC FRCP(C)**  
University of Toronto

**Hans Forssberg, MD, PhD**  
Karolinska Institutet

**Eileen G. Fowler PhD, PT**  
UCLA Center for Cerebral Palsy

**Kathleen Friel, PhD**  
Burke Medical Research Institute

**Bernadette Gillick, PhD, MSPT, PT**  
University of Wisconsin-Madison

**Laurie Glader, MD**  
Nationwide Children's Hospital

**Heakyung Kim, MD**  
University of Texas Southwestern Medical Center

**Nathalie Maitre, MD, PhD**  
Emory University School of Medicine

**Byron Lai, Ph.D, MS**  
Children's Hospital of Alabama

**Unni G. Narayanan, MBBS, MSC, FRCSC**  
University of Toronto Holland Bloorview Kids Rehabilitation Hospital

**Anna Penn, MD, PhD**  
Columbia University

**Mark Peterson, Ph.D, MS, FACSM**  
University of Michigan

**Peter L. Rosenbaum, MD, FRCP(C)**  
CanChild Centre for Childhood Disability Research  
McMaster University

**Lisa Thornton, MD**  
Sidra Hospital in Doha, Qatar

**Seth Warschausky, PhD**  
University of Michigan



## DR. KATHLEEN FRIEL

**Healthcare Visionary Leadership Award**

Dr. Friel is the Lab Director at the Clinical Laboratory for Early Brain Injury Recovery, Burke Neurological Institute and Associate Professor of Neuroscience, Brain and Mind Research Institute, at Weill Cornell Medicine

Dr. Friel's research focuses on the importance of motor activity in cerebral palsy neurorehabilitation. Her research examines the neural connections that are important for dexterous hand control, and how hand therapies can strengthen these connections in people with CP. Her research engages people with CP in intensive hand therapies, using intensive play-based therapy or robotic therapy, paired with non-invasive brain stimulation. Her laboratory also uses anatomical and physiological assessments to study how different interventions changes motor circuits in the brain. Her team also studies factors that contribute to motor impairments, such as sensory impairments and abnormal spinal circuitry. Her work is funded by multiple NIH grants, foundations, and the State of New York. As an adult with CP, Dr. Friel is passionate about increasing research to improve the lives of adults with CP, and has multiple research projects engaging adults with CP in exercise, robotics, and spinal reflex conditioning.

Dr. Friel received her B.A. in Biology at Rice University, an M.S. in Neuroscience at the University of Texas Health Sciences Center at Houston, and a Ph.D. in Neurophysiology from the University of Kansas Medical Center. She completed a postdoctoral fellowship at Columbia University Medical Center. She also received a M.S. in Biostatistics from Columbia University, with a focus on patient-oriented research.



# HONOREES

## Gala 2022



### UNITED STATES CONGRESSMAN STEVE COHEN

#### Legislative Advocacy Award

United States Congressman Steve Cohen (TN) has dedicated his life to public service. As a child, the challenges of living with polio taught him how to overcome obstacles through persistence and determination, values which would shape his career as a legislator. Filing to run for office on the same day he first registered to vote, Congressman Cohen stepped onto the path that has defined his life and affected the lives of people in Memphis, across Tennessee and now across America throughout his career in national, state and local politics emphasizing his legislative philosophy: fighting to ensure the basic human rights of every American, such as access to health care.

During his 24 years in the Tennessee State Senate, Congressman Cohen amassed a strong record of passionate, honest and unselfish service prior to his election to the U.S. House of Representatives in 2006. Congressman Cohen immediately distinguished himself on the Hill for his thoughtful legislation and quick wit. He also quickly earned a reputation as a champion of civil rights and justice on the highly influential Judiciary Committee, and was instrumental in passing the first-of-its-kind House resolution apologizing for the enslavement and racial segregation of African Americans.

Congressman Cohen has remained a steadfast leader on issues of importance to the people leading the policy debate on issues like infant mortality, health care, the economy, crime, veterans issues, transportation, infrastructure, education and most recently, the vital public health need for federal cerebral palsy research investment.

In 2019 Congressman Cohen was named Chairman of the House Judiciary Committee's influential Subcommittee on the Constitution, Civil Rights, and Civil Liberties. He is a member of several health-care focused caucuses including the Congressional Medicare for All Caucus and the House Bipartisan Disabilities Caucus.

Congressman Cohen's goal is as it has always been: to ensure that everyone – regardless of race, class or creed – has the opportunity to achieve their American dream.

# HONOREES

### SENIOR POLICY ADVISOR CRAIG DULNIAK



#### Legislative Advocacy Award

In his role as Senior Policy Advisor to Congressman Steve Cohen (TN-09), Craig Dulniak manages a legislative portfolio that includes health care, natural resources, environment, energy, armed services and veterans. He has worked for Congressman Cohen for more than 12 years, including two in the Tennessee State Senate and 10 on Capitol Hill. This is his second stint working with Congressman Cohen, as he took a hiatus from Congress for a few years to work at the University of Pennsylvania's Abramson Cancer Center. He earned a Bachelors degree in Journalism from Middle Tennessee State University and a Masters in Public Policy from Georgetown University. Craig and his wife have a 5-year-old son with cerebral palsy, which has enhanced Craig's drive to make America's healthcare system more accessible and affordable and his support for additional federal healthcare research, most specifically for cerebral palsy.

# Vera Bradley

#### Business Inclusion Innovation Award

Best known for their iconic prints and smart styles, Vera Bradley is a leading designer of women's handbags, travel items and accessories. They design thoughtful solutions filled with special details that make each day easier ... and a bit more beautiful.

Friends Barbara Bradley Baekgaard and Patricia R. Miller were traveling together in 1982 and recognized a lack of feminine-looking luggage for women and decided to create their own. Their friendship and desire to bring beauty to the world continue to remain at the heart of the company. At Vera Bradley, they believe we are truly better together. Each of us has something to add — a passion, a spark, a perspective — that makes our community so incredibly vibrant. The team at Vera Bradley is committed to making the world a brighter, more inclusive place for all.

Project Quilt was established in 2020. The mission of Project Quilt is “to enhance and celebrate diversity, equity and inclusion throughout our company and in each of the communities we serve.” This associate-led and executive-backed corporate initiative is tracking progress within three key areas of impact: our associates, our customers and our community.



The Cerebral Palsy Foundation is committed driving real world impact through our network of influential researchers, thinkers and organizations around the world resulting in significant positive change in healthcare, education, technology, public awareness and policy.

Here are a few of our signature initiatives:

### **WE ARE IMPLEMENTING WAYS TO RECOGNIZE CEREBRAL PALSY AND PROVIDE INTERVENTIONS EARLIER**



Improving health begins with early detection and early intervention of cerebral palsy. Through our research and professional training, we are reducing the time it takes for an infant to be diagnosed with cerebral palsy to less than one year of age - from an average of 24 months - giving infants the best opportunity to receive intervention services they need at the earliest possible moments which can reduce the lifelong impact of impairment.

A total of eight institutions are currently included in the Cerebral Palsy Foundation Early Detection Network: Nationwide Children's Hospital, Kennedy Krieger Institute, UCLA Medical Center, Children's Hospital of Philadelphia, University of Utah, Lurie Children's Hospital, Emory University in Atlanta and Columbia University in New York.

The purpose of our Early Detection Network is to create a scalable approach to system-wide implementation practice change resulting in earlier diagnosis and treatment of cerebral palsy.

Our Early Detection Network has presented our work over 50 times at international conferences, ground rounds and workshops. We have trained more than 4000 clinicians across the US and around the world.

### **WE ARE CREATING INCLUSIVE SCHOOL COMMUNITIES**



2022 has seen the expansion and relaunch of our "Just Say Hi" inclusive education program in New York City public schools. "Just Say Hi" is now being offered to all schools in the five boroughs. As part of this partnership, we developed a five-part webinar series for parents and families which is available on the New York City Department of Education's "Beyond Access" YouTube series.

We also launched our Inclusion Matters training for our corporate partners in 2022 to promote diversity, equity and inclusion in the workplace.

### **WE ARE A TRUSTED RESOURCE FOR RELIABLE EDUCATION & INFORMATION FOR THE CEREBRAL PALSY COMMUNITY**



Being exposed to a whole new world of cerebral palsy medical terminology, interventions and information can be confusing and overwhelming. The Cerebral Palsy Foundation is here to help with Cerebral Palsy Resource, CPResource.org – designed and developed with leading experts, families and individuals with cerebral palsy – featuring reliable information and resources, from expert videos, podcasts, books, or research studies to great toys, parenting tips, accessibility resources, and travel blogs all designed to help navigate the CP journey across the lifespan. In a few short years, CPResource.org has become the largest, most comprehensive education and information cerebral palsy resource in the United States.



## WE ARE LEADING ADVOCACY & AWARENESS FOR CEREBRAL PALSY AT THE FEDERAL LEVEL



Impacting decision makers and policy makers at the federal level is a key priority for the Cerebral Palsy Foundation. We are proud to be the advocacy leaders in this space spearheading landmark legislation and cultivating Congressional “champions” resulting in increased funding for cerebral palsy research across the lifespan.

The lack of dedicated cerebral palsy federal funding over the years has limited potential advances into the care and treatment of cerebral palsy. Through the establishment of National Cerebral Palsy Awareness Day, hosting the first Congressional Briefing for Cerebral Palsy Research, and a variety of legislative and cerebral palsy community initiatives, the Cerebral Palsy Foundation has led the charge to secure federal research funding at the Centers of Disease Control & Prevention, and increased funding at the National Institutes of Health (NIH) which will propel the field and research forward in a powerful way.



## WE ARE COMMITTED TO RECOGNIZING THE GAPS AND FINDING SOLUTIONS FOR ADULTS WITH CEREBRAL PALSY



As individuals with cerebral palsy (CP) age, they face unique challenges which complicate their ability to access and receive appropriate health care. These problems exist at the level of the health care system, the individual providers, and the individuals with CP themselves. At the medical system level, there is an inadequate number of professionals who are informed about, and interested in the care of adults with CP.

The goal of our landmark initiative: Medical Care of Adults Living with Cerebral Palsy: A Clinical Practice Guideline is to develop and validate a clinical practice guideline (CPG) with recommendations to support high-quality primary care for adults living with CP.

Anticipated outcomes include a robust understanding of the unique healthcare needs facing adults with CP, as well as the specific strategies to ensure seamless integration into a clinic and learning health systems. The creation of fully vetted and accepted Clinical Care Guidelines for adults with CP will inform coordination of clinical care to help prevent chronic conditions and improve health over the lifespan.



## PERFORMERS

### CAITLIN KNOWLES

Performer and Educator



Caitlin Knowles is a performer and educator based in the NYC/NJ area. They graduated from Montclair State University with a BFA in Dance and Theater and continue their training by taking classes regularly at Gibney, Peridance and Steps on Broadway in NYC. They have committed to growing as an educator and choreographer by participating in programs such as the ABT NTC Pre-Primary-Level 3 Teacher Training, Royal Winnipeg Ballet Summer Teacher Training, AXIS Summer Intensive and BergenDanceMakers. Caitlin is so grateful to have been able to perform works by José Limón, Bill T. Jones, Nancy Lushington, Doug Varone, Marked Dance Project, Meghan Daly, David Ingram, Mei Yamanaka, Nikki Manx Dance Project, MarDel Dance, and Stephanie Beauchamp among others. They have also had the opportunity to perform in venues such as The Joyce Theater, Gibney, Hackensack Performing Arts Center, The Actors Fund Arts Center, Ramapo College, and Oskar Shindler Performing Arts Center. Their choreography has been shown at festivals/events such as The Craft, Manifest, NJ Mental Health Association webinar, Dance Parade, DanceRising, and Anytime Anyplace Online Dance Film Festival and most recently performed with Nicole Kadar and Dancers, Susie McHugh and Dancers, Abilities Dance Boston and Heidi Latsky Dance.

**SPECIAL  
THANKS TO:**

**HEIDI  
LATSKY  
DANCE**

## PERFORMERS

### DONALD LEE

Dancer



Donald Lee is a bilateral amputee artist whose movement practice explores self-identity informed by his disability. As a member of Heidi Latsky Dance, he has performed in ON DISPLAY GLOBAL, an iteration of SOLO FLIGHT, NYC Dance Parade, and most recently at Little Island. He has presented at FOLX on the topic of bodily autonomy and medical ableism. He briefly appeared in Ryan Heffington's TED Talk on "How dance can unleash your inner joy," Major Lazer's "Lay Your Head on Me" music video, and was in a Fosse number as a tribute to Ann Reinking to benefit Positive Exposure. In his spare time, Donald bakes with his sourdough starter "Yeast Saint Laurent." He lives with his boyfriend Sean and their senior Shih Tzus Marshmallow and Loki in Brooklyn, New York.



### MEREDITH FAGES

Dancer

Meredith Fages joined HLD in 2007 and has also performed with Armitage Gone! Dance, Alexandra Beller, Monica Bill Barnes/Waterwell, Wally Cardona, David Hallberg/Francesco Vezzoli, Deborah Hay, Mana Kawamura, Motley Dance, Jimena Paz, Laura Peterson, Becky Radway, Sarah Skaggs, Steeledance, Palissimo, Mitzi Adams, Verlezza Dance, Kim Whittam, Eidolon Ballet, Helen Heineman, Todd Rosenlieb Dance, and Virginia Ballet Theatre, featured in Ashton, Balanchine, Christensen, Tudor ballets. Described by Deborah Jowitt as a "remarkable dancer...adept in some society of the future, [a] primal, near-aquatic creature slipping around in a watery world...", she graduated from Columbia University with a Pre-Medical Concentration in English. Her writing has appeared in Dance Magazine, Dance Teacher and Well + Good.





The Barbara Bradley Baekgaard Family Foundation

In Memory of  
our brother and  
uncle James  
Edward Bradley



Thank you  
CP Foundation  
for all of your  
hard work and  
dedication

Love,  
the Bradley &  
Denihan families



TO CPF,

As someone with CP, it is an honor to be a Board Member and see the astounding work CPF is doing. From partnering with the Board of Education on an inclusion curriculum in NYC schools, to providing information and support to parents and caregivers to facilitate early intervention, giving children with CP the opportunity to succeed.

It's been amazing to see the exponential growth of the Foundation to now include the Annual Early Cerebral Palsy Health Summit, that reaches and educates medical providers across the globe, and new initiatives for Adults with CP. I'm so excited to see our work impact individuals with CP throughout the lifecycle.

What an incredible group of passionate individuals whose mission it is to improve the lives of people with CP. You have changed the way I view the world.

You inspire me and so many others.  
Thank you for your commitment.

Ila Eckhoff

**BNP Paribas** is proud to join our key client and partner, **Ila Eckhoff** from Blackrock, in support of **THE CEREBRAL PALSY GALA** which makes life-changing programs possible.



**BNP PARIBAS**



Dear Cerebral Palsy Foundation,

Thanks for all you do for our patients, families and community. You believe that together we can change the world for individuals with CP, and we believe in you! It is a privilege to work with the entire CPF team.

Congratulations to  
Dr. Friel and all the awardees!

We hope 2023 is the CPF's best year yet.

**~ Cerebral Palsy Foundation  
Scientific Advisory Council**

Deborah Gaebler-Spira,  
Jan Brunstrom-Hernandez,  
Hank Chambers, Ted Conway,  
Diane Damiano, Mauricio Delgado-Ayala,  
Darcy Fehlings, Hans Forssberg,  
Eileen Fowler, Bernadette Gillick,  
Laurie Glader, Heakyung Kim, Byron Lai,  
Nathalie Maitre, Unni Narayanan,  
Anna Penn, Mark Peterson,  
Peter Rosenbaum, David P. Roye,  
Lisa Thornton, Seth Warschausky

Carla Ruben and Creative Edge Parties  
are honored once again  
to be a part of tonight's

**Cerebral Palsy Foundation Gala**

[www.creativeedgeparties.com](http://www.creativeedgeparties.com)

New York • Miami • Palm Beach

In Memory of Dionysios Avramopoulos  
2003-2007

**acadia**

Acadia is a proud sponsor of the  
**Cerebral Palsy Foundation**

Driving the derivatives  
industry as one  
acadia.inc



**Debby and Peter Weinberg** and the  
**Weinberg Family Cerebral Palsy Center**  
congratulate the **Cerebral Palsy Foundation** for  
outstanding leadership and advocacy in the field of  
Cerebral Palsy

 **COLUMBIA**  
WEINBERG FAMILY  
CEREBRAL PALSY CENTER

 **BRIDGING CARE  
FOR A LIFETIME**

[www.weinberg.cuimc.columbia.edu](http://www.weinberg.cuimc.columbia.edu)

**Bank of America**  
is proud to be a sponsor of the  
**Cerebral Palsy Foundation Gala**



**PROUD  
TO SUPPORT**

Cerebral Palsy Foundation

[www.goldmansachs.com](http://www.goldmansachs.com)

GLOBAL MARKETS  
DIVISION

Proud to take part in this year's  
**Cerebral Palsy Foundation  
Annual Benefit Gala.**



**J.P. Morgan proudly supports**

**Ila Eckhoff and the  
Cerebral Palsy Foundation**

**Thank you.**

We salute CPF for creating new possibilities  
for people with cerebral palsy.

**BlackRock.**

[blackrock.com](http://blackrock.com)

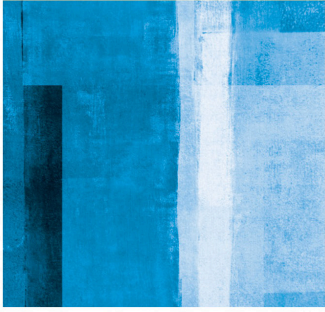
©2022 BlackRock, Inc. All rights reserved. BLACKROCK is a registered trademark  
of BlackRock in the United States and elsewhere. 298350-10-2021

Saluting the  
**Cerebral Palsy  
Foundation's work  
for individuals with  
disabilities!**

With gratitude,  
Michelle Kassner  
Daisy and Cordelia Gallagher



Morgan Stanley



Morgan Stanley salutes  
**Ila Eckhoff  
and BlackRock**

in their support of the  
Cerebral Palsy Foundation

© 2022 Morgan Stanley

Celebrating an organization  
that makes a difference



Finding a purposeful way to assist one another, turning belief into action, and working toward shared goals — these are the driving forces that lift up humanity and make a difference, one person at a time. Wells Fargo is committed to supporting organizations, like the Cerebral Palsy Foundation, that make a difference in our community.

© 2022 Wells Fargo & Company. All rights reserved. 7128349

THE HEART OF  
**POSTTRADE**

OSTTR/

The new home of **MarkitServ, Traiana, TriOptima & Reset**

**SOCIETE GENERALE  
IS PROUD TO SPONSOR**

**THE CEREBRAL PALSY  
FOUNDATION ANNUAL GALA**



**Symphony is proud  
to be a supporter of the  
Cerebral Palsy Foundation**

SYMPHONY.COM



**FROM EVERYONE AT THE  
CEREBRAL PALSY  
FOUNDATION**

**THANK YOU FOR  
YOUR SUPPORT!**



**CEREBRAL  
PALSY  
FOUNDATION**  
DISCOVERY FOR DISABILITY

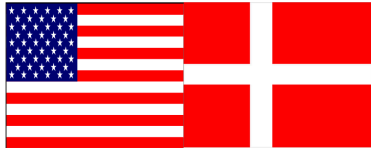
# THANK YOU SUPPORTERS



CREATIVE EDGE PARTIES

---

## GOLD



The Barbara Bradley Baekgaard Family Foundation



BNP PARIBAS

---

## SILVER

BRADLEY FAMILY

DENIHAN FAMILY

---

## BRONZE

acadia

BANK OF AMERICA 

 BARCLAYS

BLACKROCK

 COLUMBIA  
WEINBERG FAMILY  
CEREBRAL PALSY CENTER

Goldman  
Sachs

ILA ECKHOFF

J.P.Morgan

MICHELLE KASSNER

Morgan Stanley

JSTTR/

 SOCIETE  
GENERALE

 SYMPHONY

WELLS  
FARGO

---

## SPECIAL THANKS

 citi

Linklaters

 Tradeweb

 UBS

JAMES VOLCKER



**CEREBRAL  
PALSY  
FOUNDATION**

**FROM EVERYONE AT THE  
CEREBRAL PALSY FOUNDATION  
THANK YOU FOR YOUR  
SUPPORT**

**TO LEARN MORE ABOUT OUR  
PROGRAMS**

**[www.CerebralPalsyFoundation.org](http://www.CerebralPalsyFoundation.org)**

**f @cerebralpalsyfoundation**

**📷 @yourcpf.org**